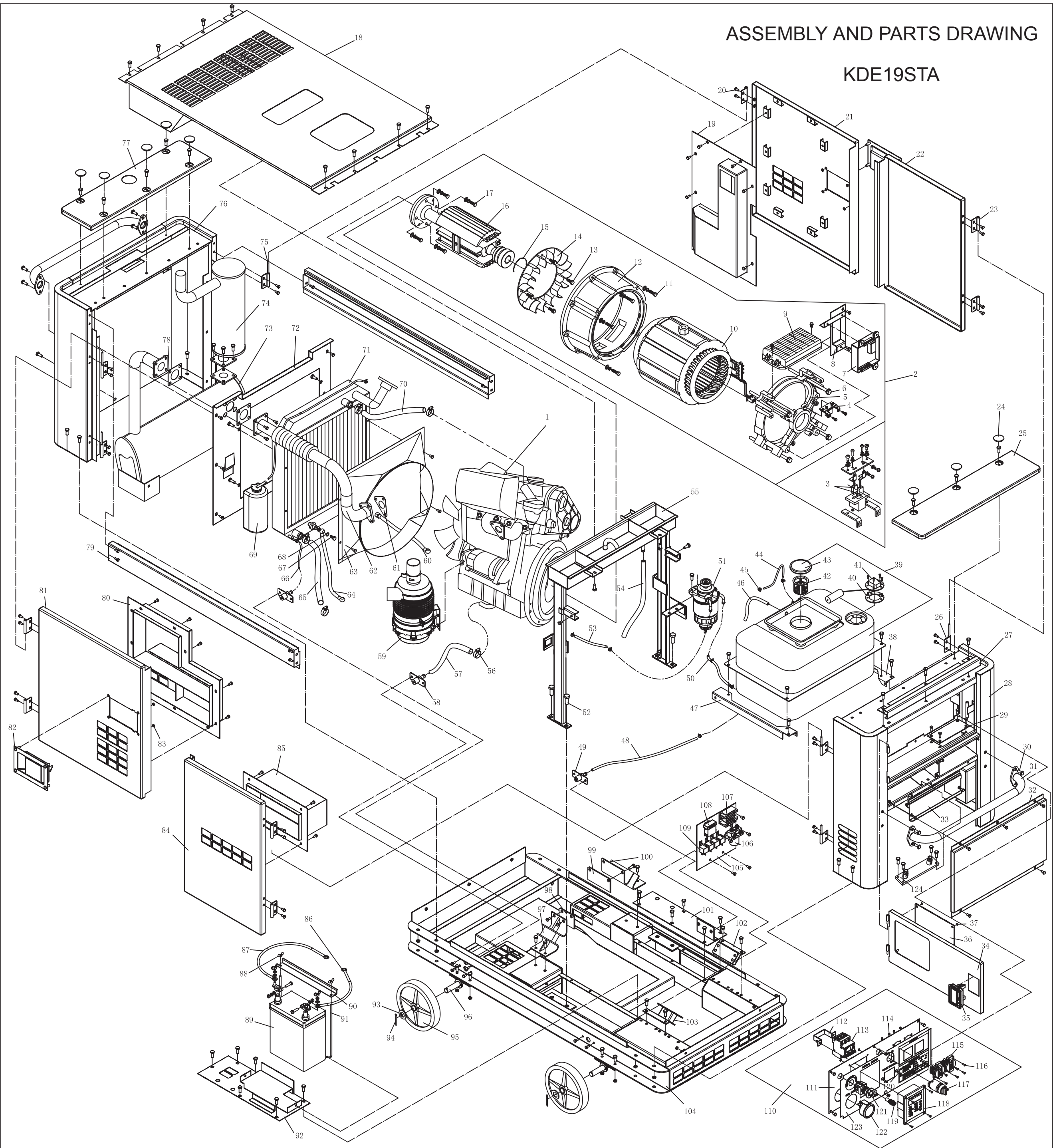


ASSEMBLY AND PARTS DRAWING

KDE19STA



No.	Part No.	Description	Qty	No.	Part No.	Description	Qty	No.	Part No.	Description	Qty	No.	Part No.	Description	Qty	No.	Part No.	Description	Qty
1	KM376AG-1000000	Engine Assembly	1	22	KDE19ST-07600	Door Plate Subassembly	1	43	KDE19T3-14200	Fuel Tank Cover	1	64	KM376-200	Oil Hose	1	85	KDE19ST-07200	Fan Duct Weldment of Door Plate	1
2	KDE19T3-02000	Motor Assembly	1	23	KDE19ST-07012	Fixed Plate	8	44	KDE19T3-14002	Oil Return Pipe	1	65	KDE19T3-10003	Water Outlet Pipe of Water Tank	1	86	KDE19ST-13210 Black	Battery Negative Pole Wiring	1
3	KT245-03001	Carbon Brush	2	24	KDE35ST-04001	Water-proof Cover	8	45	QC/T619-1999	Lathe Dog 8	11	66	KD19T3-10004	Water Draining Pipe of Water Tank	2	87	KDE19ST-13210 Red	Battery Positive Pole Wiring	1
4	KT245-03100	Carbon Brush Bracket Subassembly	1	25	KDE19ST-04200	Front Column Cover Weldment	1	46	KDE19T3-14006	Oil Outlet Pipe of Oil Panel	1	67	KM376G-1013102	Bolt	1	88	GB/T62-1988	Butterfly Nut M6	2
5	KT245-00002	Rear End Cover	1	26	KDE19ST-07010	Hinge	4	47	KDE19T3-14015	Right Supporting Plate of Fuel Tank	1	68	JB982-1977	Washer	7	89	65AH-12V	Battery	1
6	GB/T5783-2000	Bolt M10X220	4	27	KDE19ST-04010	Decoration Plate Weldment	1	48	KDE19T3-14011	Oil Outlet Pipe of Fuel Tank	1	69	KDE19T3-10001	Antifreeze Jar	1	90	KDE19T3-03002	Battery Pressure Plate	1
7	PLY-MB3-C1	Digital Control Module	1	28	KDE19ST-04100	Front Column Weldment	1	49	KDE60ST-03020	Fuel Outlet Pipe Weldment	2	70	KDE19T3-10002	Water Inlet Pipe Of Water Tank	1	91	KDE19T3-03003	Pulling Plug of Pressure Plate	2
8	KDE19ST-02100	Module Fixed Bracket	1	29	KDE19ST-04004	Cover Plate	1	50	KDE19T3-14009	Oil Outlet Pipe	1	71	KDE19ST-10200	Radiator Assembly	1	92	KDE19ST-03010	Battery Supporting Plate Weldment	1
9	AVR-15-1	AVR	1	30	GB/T5788-2000	Bolt M8X16	76	51	DX200M	Oil Water Separator Assembly	1	72	KDE19ST-10200	Clapboard Weldment	1	93	GB/T97. 1-2002	Flat Washer 20	4
10	KT270-02000	Stator Assembly	1	31	KDE19ST-04020	Handle Weldment	2	52	GB/T5788-2000	Bolt M12X30	4	73	KDE19ST-11100	Muffler Assembly	1	94	GB/T91-2000	Cotter Pin 3	4
11	GB/T5782-2000	Bolt M8X35	8	32	KDE19ST-04001	Front Cover Plate	1	53	KDE19T3-14013	Oil Supplying Pipe	1	74	KDE19ST-11200	Muffler Weldment	1	95	KDE19T3-03310	Wheel	4
12	KT270-00001	Front End Cover	1	33	KDE19ST-04002	Junction Box Cover	1	54	KDE19T3-05002	Water Draining Pipe	1	75	KDE19ST-07020	Hinge	4	96	KDE19ST-03200	Axle Weldment	2
13	GB/T5788-2000	Bolt M8X25	4	34	KDE19ST-04300	Control Panel Weldment	1	55	KDE19ST-05000	Middle Column Assembly	1	76	KDE19ST-06100	Rear Plate Weldment	1	97	KDE19T3-12200	Right Shock Pad of Engine	1
14	KT270-00003	Fan	1	35	KDE12E-08350	Door Lock	1	56	QC/T619-1999		12	77	KDE19ST-06200	Rear Cover Plate Weldment	1	98	KDE19T3-12001	Right Retaining Plate	1
15	GB/T894-1986	Bearing Retaining Ring	1	36	KDE19ST-04005	Organic Glass	1	57	KDE19T3-01004	Oil Outlet Pipe	1	78	KDE19T3-11001	Exhaust Pipe Gasket (Asbestos)	2	99	KDE19T3-12002	Left Retaining Plate	1
16	KT270-01000	Rotor Assembly	1	37	GB/T6170-2000	Nut M6	4	58	KDE60ST-03010	Oil Outlet Pipe Weldment	1	79	KDE19ST-08001	Top Cover Decoration Plate	2	100	KDE19T3-12300	Left Shock Pad of Engine	1
17	GB/T5782-2000	Bolt M10X45	4	38	KDE19T3-14016	Left Supporting Plate of Fuel Tank	1	59	KM376AG-1109000	Air Filter Assembly	1	80	KDE19ST-07300	Fan Duct Weldment of Door Plate	1	101	KDE19ST-03020	Electrical Fixed Plate Weldment	1
18	KDE19ST-08100	Top Plate Cover Weldment	1	39	KDE19T3-14000	Fuel Tank Assembly	1	60	KM376-100	Oil Hose	1	81	KDE19ST-07400	Door Plate Subassembly	1	102	KDE19ST-12100	Shock Pad of Generator	1
19	KDE19ST-07100	Fan Duct Weldment of Door Plate	1	40	KDE19T3-14018	Rubber Washer	1	61	KDE14T-11002	Exhaust Pipe Gasket	1	82	KDE35ST-07100-M	Door Lock Assembly	2	103	KDE19ST-12200	Shock Pad of Generator	1
20	GB/T5788-2000	Bolt M6X12	107	41	KDE19T3-14017	Fuel Quantity Sensor	1	62	GB/T6170-2000	Exhaust Pipe Assembly	1	83		Nut M8	26	104	KDE19ST-03100	Base Panel Weldment	1
21	KDE19ST-07500	Door Plate Subassembly	1	42	KM168F-10004	Fuel Filling Strainer	1	63	KDE16T3-10200	Radiator Assembly	1	84	KDE19ST-07700	Door Plate Subassembly	1	105	KDE16T3-13601	Relay Base Plate	1