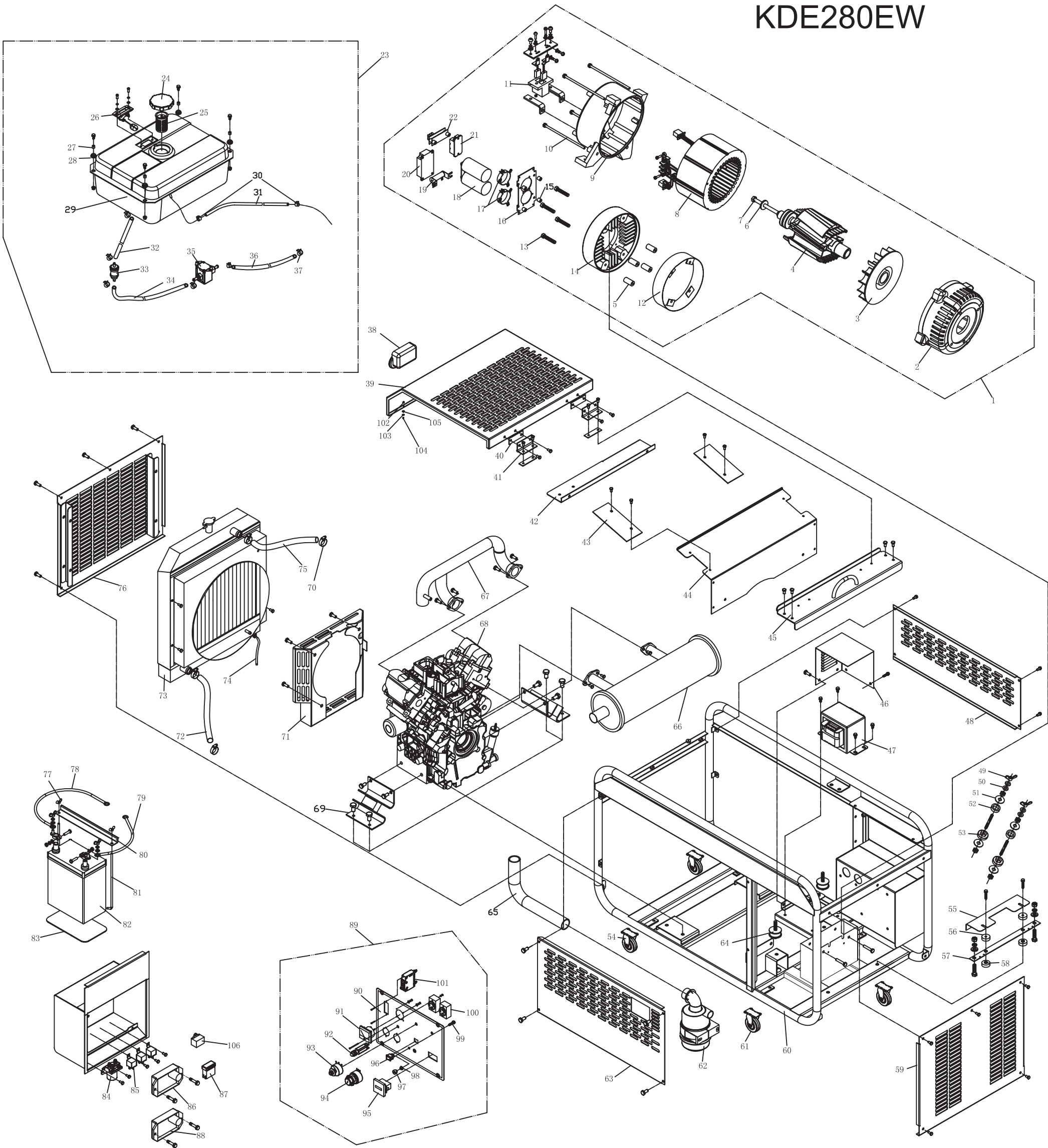


ASSEMBLY AND PART DRAWING

KDE280EW



No.	Part No.	Description	Qty	No.	Part No.	Description	Qty	No.	Part No.	Description	Qty	No.	Part No.	Description	Qty	No.	Part No.	Description	Qty
1	KTW12	Motor Assembly	1	19	500 Ω 20W	Resistor	1	37	KM168F-10011	Oil Supplying Pipe Clip Hoop	6	55	KGE12EW-03003	Cover Plate	1	73	KDE12T3-10200	Radiator Assembly	1
2	KT245-00001	Front End Cover	1	20	DIM375WKS06-S000	IBGT Module	1	38	KDE19T3-08001	Handle Cover	1	56	KGE12EW-09005	Insulation Plate of Diverter	2	74	KDE12E-11003	Water Outlet Pipe of Water Tank	1
3	KT245-01004	Fan	1	21	DF 150A A160	Three-phase Rectifier	1	39	KGE12EW-08001	Top Cover Plate	1	57	KGE12EW-09002	Diverter Plate	1	75	KDE12E-11002	Water Inlet Pipe of Water Tank	1
4	KT245-01100	Rotor	1	22	PLY-W-C280	IBGT Driving Module	1	40	KGE12EW-08001	Gasket	4	58	KGE12EW-09004	Insulation Plate of Diverter	2	76	KDE12E-03010	Water Tank Protection Plate Weldment	1
5	KT245W-00003	Connection Pipe	4	23	KDE12E-11100	Oil Tank Assembly	1	41	KGE12E-08110	Hinge Subassembly	2	59	KDE12EW-03003	Motor Protection Plate	1	77	GB/T62-1988	Butterfly Nut M6	2
6	KT245-00008	Piercing Bolt Gasket	1	24	56F-LDE-07200	Oil Tank Cover Subassembly	1	42	KDE12EW-03004	Wind Shield	1	60	KDE12EW-03100	Machine Frame Weldment	1	78	KDE12EA-13210 (Red)	Battery Positive Pole Connection Wire	1
7	KT245-00004	Piercing Bolt	1	25	KM168F-10004	Oil Filling Strainer	1	43	KDE12EW-03005	Wind Shield	2	61	KGE12E-18200A	Turning Truckle	2	79	KDE12EA-13210 (Black)	Battery Negative Pole Connection Wire	1
8	KT245W-02000	Stator	1	26	KGE12E-11200	Oil Scale Subassembly	1	44	KDE12EW-03020	Wind Shield Weldment	1	62	KGE12E-18100A	Fixing Truckle	2	80	KDE6500E-03003	Battery Pressure Plate	1
9	KT245-00002	Rear End Cover	1	27	KDE5000X-03004	Bushing	4	45	KDE12EW-03820	Hanger Plate Weldment	1	63	KDE12EW-03002	Protection Plate	1	81	KDE6500E-03004	Pressure Plate Pulling Plug	2
10	KT245-00003	Bolt	4	28	KDE5000X-03003	Shock Pad	4	46	KDE12EW-03006	Reactor Protection Shield	1	64	KGE12E-12100	Shock Pad of Generator	2	82	36AH-12V	Battery	1
11	KT245-03000	Carbon Brush	1	29	KDE12E-14100	Oil Tank Weldment	1	47	280V	Reactor	1	65	KDE12EW-01002	Air Inlet Pipe of Air Filter	1	83	KDE3500E-00002	Battery Back Plate	1
12	KT245W-00002	Protection Plate	1	30	KM168F-10013	Oil Return Pipe Clip Hoop	2	48	KDE12EW-03001	Protection Plate	1	66	KDE12E-10100	Muffler Weldment	1	84	QDC-100A DC12V	Preheat Relay	1
13	KDE12EW-00004	Hexagonal Bolt	4	31	KDE12E-14003	Oil Return Pipe of Oil Tank	1	49	GB/T62-1988	Butterfly Nut M8	2	67	KDE12EW-01100	Air Inlet Pipe	1	85	HFW4 12V 20A	Micro Relay	3
14	KT245W-00001	Radiation Fin	1	32	KDE12E-14001	Oil Outlet Pipe of Oil Tank	1	50	GB/T95-2000	Gasket	4	68	KM2V80	Engine Assembly	1	86	KDE12EW-13600	Welding Controlling Module	1
15	KDE5000X-03004	Bushing	8	33	KGE12E-11010	Papery Filter	1	51	GB/T95-2000	Gasket	12	69	KDE12E-12200	Shock Pad of Engine	2	87	BX2041	Four-line Fuse Box	1
16	KGE12EW-09002	Capacitor Installation Plate	1	34	KDE12E-14004	Oil Inlet Pipe of Electric Pump	1	52	KDE6500EW-09004	Insulation Gasket	2	70	QC/T620-1999	Ring Hoop 25-38	4	88	PLY-DAVR50S	Automatic Voltage Regulator	1
17	KGE12EW-09003	Capacitor Clip Hoop	2	35	KD388-10500	Electric Oil Supplying Pump	1	53	KDE6500EW-09005	Insulation Gasket	2	71	KDE12E-01001	Impeller Shield	1	89	KDE12EW-13100	Instrument Assembly	1
18	4700uF/160V	Capacitor	2	36	KDE12E-14002	Oil Outlet Pipe of Electric Pump	1	54	KGE12E-18100A	Fixing Truckle	2	72	KDE12ST-11001	Water Outlet Pipe of Water Tank	1	90	KDE12EW-13110	Control Panel	1