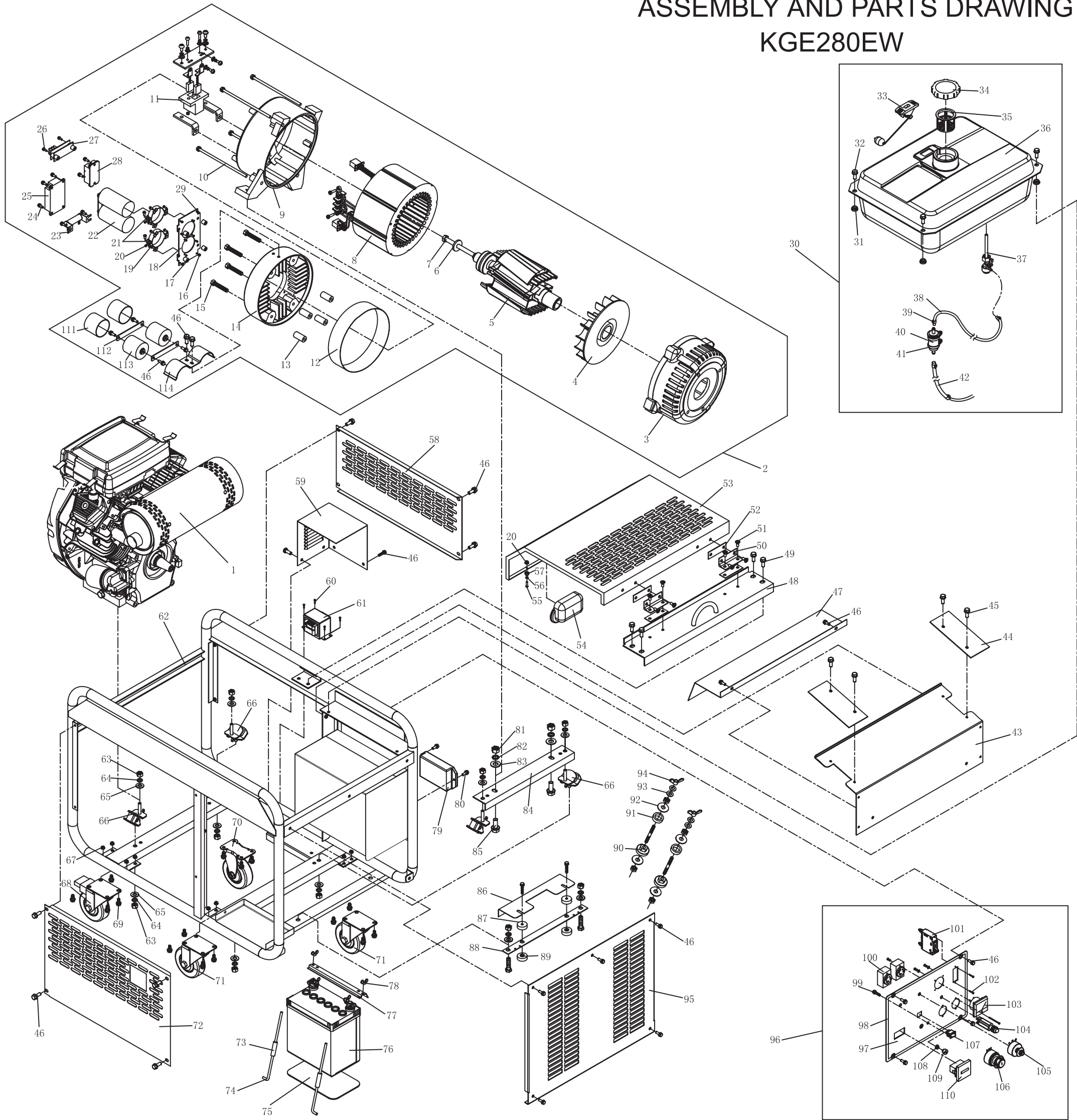


# ASSEMBLY AND PARTS DRAWING

## KGE280EW



No.	Part No.	Description	Qty.	No.	Part No.	Description	Qty.	No.	Part No.	Description	Qty.	No.	Part No.	Description	Qty.	No.	Part No.	Description	Qty.
1	KGE12E-01000	KG690 Engine	1	24	GB/T5789-1986	Bolt M5X12	8	47	KGE12E-03004	Wind Shield	1	70	4"	Wheel	1	93	GB/T95-2000	Gasket	4
2	KTW12	Motor Assembly	1	25	DIM375WKS06-S000	IBGT Module	1	48	KGE12E-08200	Top Cover Supporting Beam Weldment	1	71	4"	Wheel	2	94	GB/T62-1988	Butterfly Nut M8	2
3	KT245-00001	Front End Cover	1	26	GB/T5789-1986	Bolt M4X25	2	49	GB/T5789-1986	Bolt M8X16	4	72	KGE12E-03002	Protection Plate	1	95	KDE12EW-03003	Motor Protection Plate	1
4	KT245-01004	Fan	1	27	PLY-W-C280	IBGT Driving Module	1	50	KGE12E-08300	Hinge	2	73	KDE5000T-03019	Rubber Sleeve	2	96	KGE12E-13100	Control Panel Assembly	1
5	KT245-01100	Rotor	1	28	DF 150A A160	Three-phase Rectifier	1	51	GB/T819-2000	Screw M5X12	8	74	KDE5000T-03002	Battery Pull Rod	2	97	KGE12E-13120	Label	1
6	KT245-00008	Piercing Bolt Gasket	1	29	GB/T6172. 1-2000	Nut M4	2	52	KGE12EW-08001	Shock Pad	4	75	KDE5000T-03018	Gasket	1	98	KGE12E-13110	Control Panel	1
7	KT245-00004	Piercing Bolt	1	30	KGE12E-11000	Fuel System	1	53	KDE19T3-08001	Handle Sleeve	1	76	36AH	Battery	1	99	GB/T5789-1986	Bolt M6X20	1
8	KT245W-02000	Stator Assembly	1	31	KGE2500X-11002	Shock Pad	4	54	KGE12E-08100	Top Cover	1	77	KDE5000T-03003	Battery Pressure Plate	1	100	AC230V 21. 7A	B-type Receptacle	2
9	KT245-00002	Rear End Cover	1	32	GB/T5789-1986	Bolt M6X25	4	55	GB/T818-2000	Screw M3X15	2	78	GB/T62-1988	Butterfly Nut M6	6	101	HUM18-63/1	Breaker	1
10	KT245-00003	Bolt	4	33	KDE12E-11200	Oil Scale Subassembly	1	56	GB/T97. 1-2002	Flat Washer 3	2	79	AVR	AVR (Single Phase)	1	102	GB/T819-2000	Screw M4X10	2
11	KT245-03000	Carbon Brush	1	34	KGE2500X-11200	Fuel Tank Cover Subassembly	1	57	KGE12E-08103	Shock Pad	2	80	GB/T5789-1986	Bolt M6X30	2	103	MU45 0-300V	Voltmeter MU-45	1
12	KT245W-00002	Protection Plate	1	35	KGE2500X-11300	Strainer	1	58	KGE12E-03001	Protection Plate	1	81	GB/T41-2000	Nut M10	2	104	AD11-16A/20-6GZ~220V	Welder Indication Lamp	1
13	KT245W-00003	Connection Pipe	4	36	KDE12E-11100	Fuel Tank Weldment	1	59	KDE12EW-03006	Reactor Shield	1	82	GB/T93-1987	Elastic Washer 10	2	105	WX111 150 $\Omega$ $\pm$ 5%	Adjusting Switch for Welding Current	1
14	KT245W-00001	Thermal Fin	1	37	KGE2500Xi-11500	Oil Switch Subassembly	1	60	GB/T818-2000	Screw M4X15	4	83	GB/T97. 1-2002	Flat Washer 10	2	106	JK427	Electric Starting Switch	1
15	KDE12EW-00004	Hexagonal Bolt	4	38	KGE12E-11001	Fuel Pipe	1	61	280V	Reactor	1	84	KGE12E-03004	Motor Supporting Plate	1	107	KCD2 8A/16A 250V	Choosing Switch for Welding Current	1
16	GB/T6172. 1-2000	Nut M5	8	39	KGE5500X-11003	Fuel Tank Lathdog	4	62	KGE12E-03100	Frame Weldment	1	85	GB/T5789-1986	Bolt M10X45	2	108	GB/T6177. 1-2000	Nut M6	1
17	KDE5000X-03004	Bushing	8	40	191 201 511A	Fuel Filter	1	63	GB/T41-2000	Nut M8	8	86	KGE12EW-03003	Cover Plate	1	109	KDE5000E-09005	Grounding Nut	1
18	KGE12EW-09002	Capacitor Installation Plate	1	41	KG670-14005	Lathdog	2	64	GB/T93-1987	Elastic Washer 8	8	87	KGE12EW-09005	Diverter Insulation Plate	2	110	891-331 DC12V	Timer	1
19	GB/T818-2000	Screw M3X12	8	42	KGE12E-11002	Fuel Pipe	1	65	GB/T97. 1-2002	Flat Washer 8	8	88	KGE12EW-09002	Diverter Plate	1	111	KDE6500EW-09012	Absorption Capacitor Sleeve	2
20	GB/T6172. 1-2000	Nut M3	10	43	KGE12E-03010	Wind Shield Weldment	1	66	KDE3500X-01000	1# Shock Pad	4	89	KGE12EW-09004	Diverter Insulation Plate	2	112	KDE6500EW-09005	Absorption Capacitor Connection Plate	2
21	KGE12EW-09003	Capacitor Lathdog	2	44	KGE12E-03003	Wind Shield	2	67	GB/T6177. 1-2000	Nut M10	16	90	KDE6500EW-09005	Insulation Gasket	2	113	800VAC 20 $\mu$ F $\pm$ 5%	Special Capacitor	2
22	4700uF/160V	Capacitor	2	45	GB/T5789-1986	Bolt M5X12	4	68	4"	Wheel	1	91	KDE6500EW-09004	Insulation Gasket	2	114	KDE6500EW-09007	Absorption Capacitor Fixed Plate	1
23	500 $\Omega$ 20W	Resistor	1	46	GB/T5789-1986	Bolt M6X12	29	69	GB/T5789-1986	Bolt M10X20	16	92	GB/T95-2000	Gasket	4				