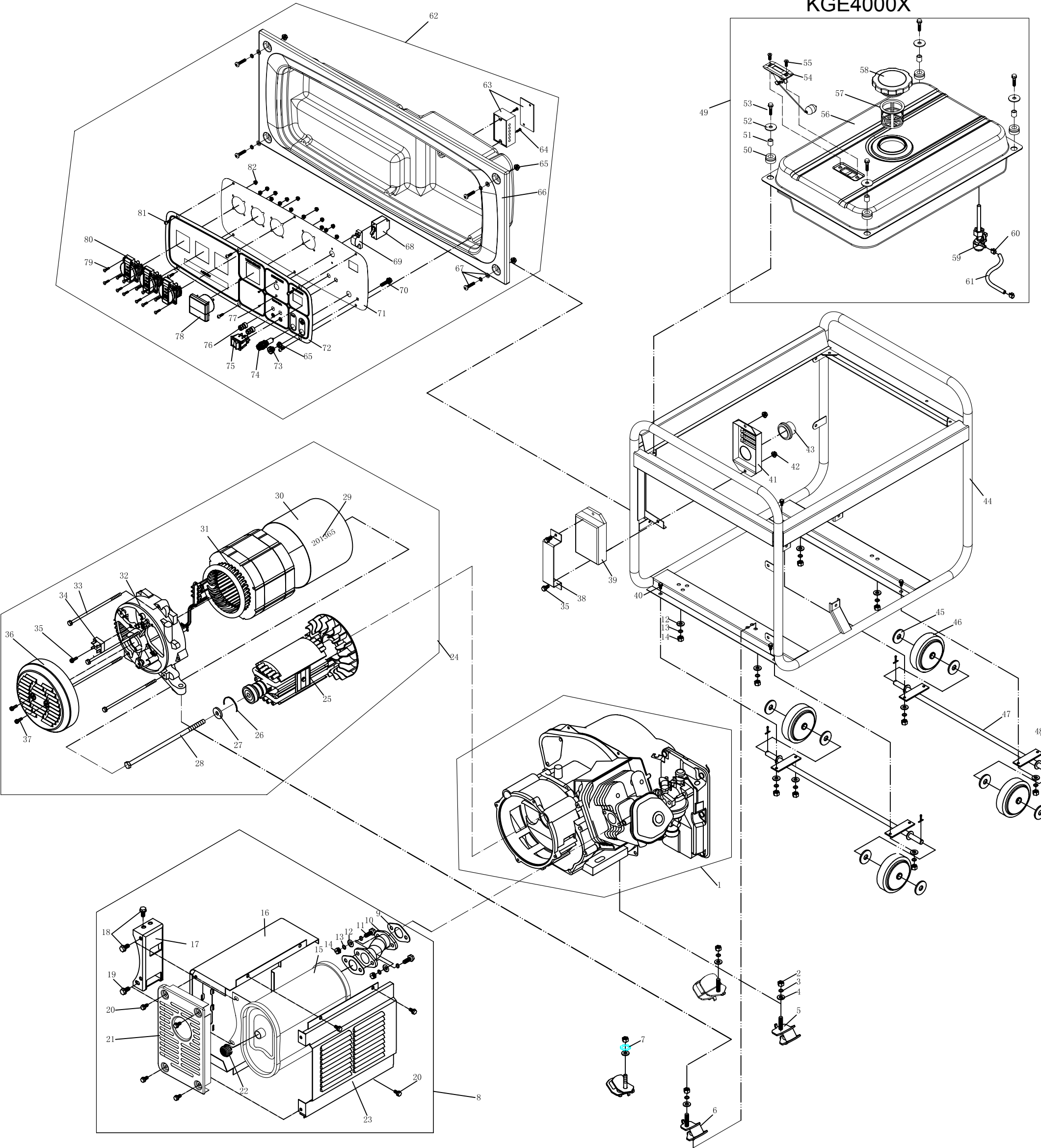


ASSEMBLY AND PARTS DRAWING
KGE4000X



No.	Parts No.	Description	Qty.	No.	Parts No.	Description	Qty.	No.	Parts No.	Description	Qty.	No.	Parts No.	Description	Qty.
1	KG270G (1) X	Gasoline Engine	1	26	6204DU	Clip Ring	1	51	KGE5500E-11001	Height Bushing	4	75	RF1004	Boat-shape Switch	1
2	GB/T6170-2000	Nut M10	4	27	GB/T96. 1-2002	Washer 10	1	52	GB/T96. 1-2002	Big Washer 6	4	76	J555 (5A)	DC Post Head	2
3	GB/T93-1987	Spring washer 10	3	28	KT190-00006	Piercing Bolt	1	53	GB/5789-1986	Hexagnal Flange Bolt M6X25	4	77	GB/T818-85	Screw M3X8	2
4	GB/T97. 1-2002	Flat washer 10	4	29		Generator Code	1	54	KGE5500E-11300	Oil Scale Assembly	1	78	MU-45 (300V)	Voltmeter	1
5	KGE5500E-12100	Left Shock Pad	2	30	KT190-00007	Protection Plate	1	55	GB/T818-2000	Sunk Screw M5X10	2	79	GB/T818-2000	Plus Screw M5X16	12
6	KGE5500E-12200	Right Shock Pad	2	31	KT190-02000	Stator Assembly	1	56	KGE5500E-11100a	Oil Tank Welded	1	80	16A 250V	E-Receptacle	3
7	GB/T862. 2-1987	Tighten Washer 10	1	32	KT190-00001	Rear Cover	1	57	KGE5500E-11005	Filling Strainer	1	81	GB/T845-1985	Plug Screw ST4.2X15	6
8	KGE4000X-a-10000	Muffler Assembly	1	33	KT190-00004	Cover Bolt	4	58	KGE5500E-11200	Oil Tank Cover Subassembly	1	82	GB/T6177. 1-2000	Hexagonal Flange Nut M5	12
9	KGE5500E-10001	Seal Gasket of Curved Pipe	2	34	KBPC2510	Rectifier	1	59	KGE5500E-11400	Oil Switch Subassembly	1				
10	KGE5500E-10200	Muffler Curved Pipe Welded	1	35	GB/T5789-1986	Bolt M5X20	3	60	KM168F-10013	Oil Pipe Lathedog	2				
11	GB/T5786-2000	Hexagonal Bolt M8X1X30	2	36	KT190-00005	Motor Rear Cover	1	61	KGE5500E-11004	Oil Pipe	1				
12	GB/T97. 1-2002	Flat washer 8	10	37	GB/T5789-1986	Bolt M5X12	2	62	KGE4000X-13000	Electrical Assembly	1				
13	GB/T93-1987	Spring washer 8	12	38	KDE5000E-09004	AVR Press Plate	1	63	FJ6/JHD	Earthing Connection Box	1				
14	GB/T6170-2000	Nut M8	10	39	PLY-DAVR-50S	AVR	1	64	GB/T823-1988	Screw M4X20	2				
15	KGE5500E-10100a	Muffler Welded	1	40	GB/T5789-1986	Bolt M8X20	8	65	GB/T6177. 1-2000	Hexagonal Flange Nut M6	5				
16	KGE5500E-10410	Muffler Inner Protection Plate Welded	1	41	KGE6500E-03114	AVR Protection Cover	1	66	KGE6500E-09001Ba	Rear Cover of Control Panel	1				
17	KGE5500E-10500	Muffler Fixed Bracket Welded	1	42	GB/T6177. 1-2000	Hexagonal Flange Nut M5	2	67	GB/T9074. 4-1988	Plug Screw, Spring Washer, Plat Washer M6X20	4				
18	GB/T5789-1986	Bolt M8X16	2	43	KGE6500E-09002	Fixed Sheath	1	68	BSB1-30 1P	Breaker	1				
19	GB/T5789-1986	Bolt M8X30	1	44	KGE4000X-03100a	Housing Welded	1	69	FYM30-1P	Rainproof Cover of Breaker	1				
20	GB/T5789-1986	Bolt M6X14	7	45	GB/T97. 1-2002	Flat Washer 12	8	70	GB/T5789-1986	Hexagonal Flange Bolt M6X20	1				
21	KGE5500E-10401a	Rear Cover of Muffler Protection Plate	1	46	KGE6500E-18101a	4" Polyester Wheel 100	4	71	KGE4000X/RE-13110	Control Panel	1				
22	KGE6500E-10300	Fireproof cap	1	47	KGE6500E-18100a	Axle Welded	2	72	KGE4000X/RE-13120	PVC Lable	1				
23	KGE5500E-10420	Muffler Outer Protection Plate Welded	1	48	GB/T91-2000	Cotter Pin 3.2X40	4	73	3GF-LE-5004a	Grounding Nut	1				
24	KT-5. 0 (190)	Motor Assembly	1	49	KGE5500E-11000	Fuel System	1	74	BLX	Fuse Seat	1				
25	KT190-01000	Rotor Assembly	1	50	KGE5500E-11002	Shock Pad	4								